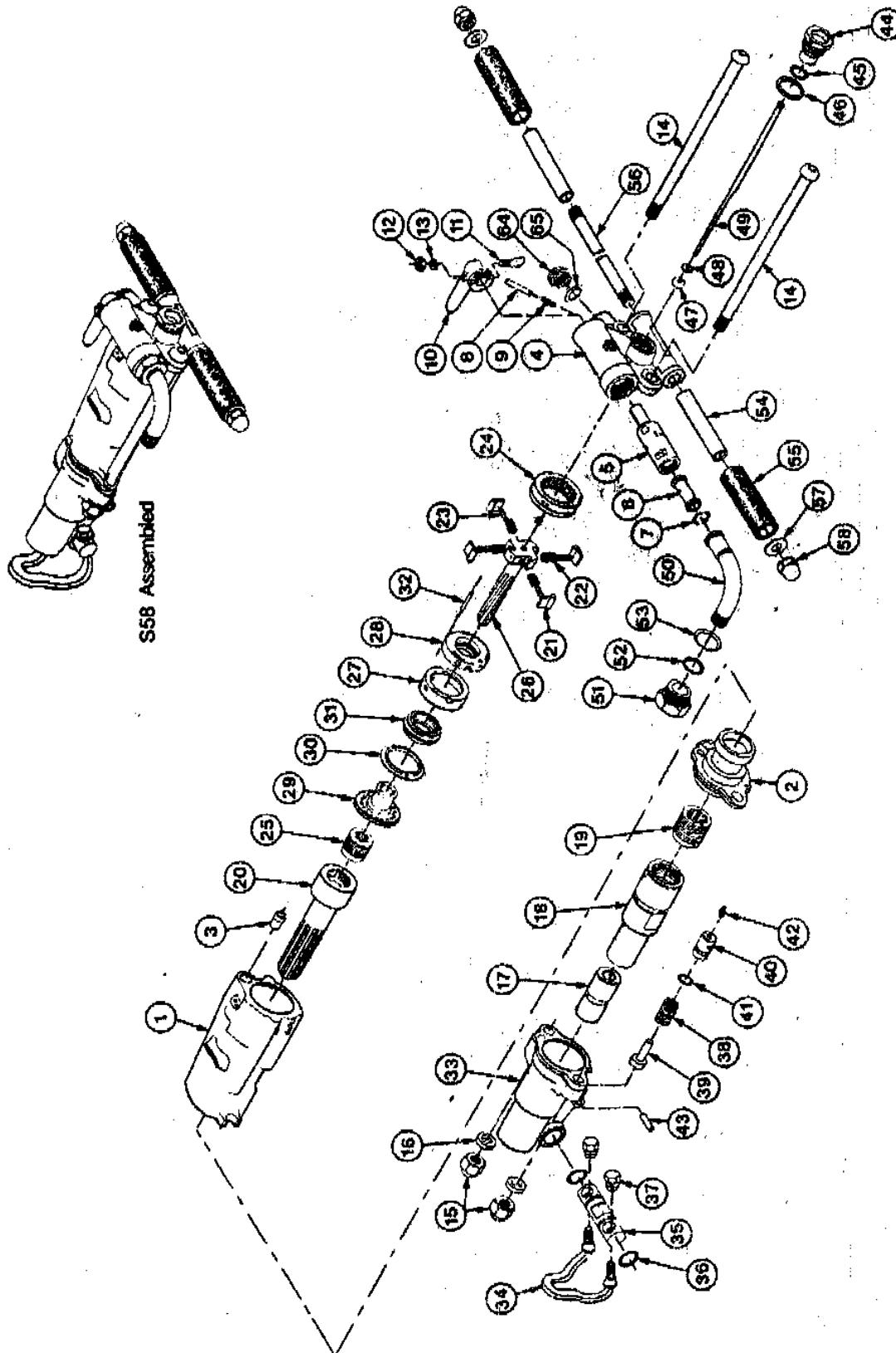


Gardner-Denver S-58 Rockdrill with New Style Fronthead



For Parts Call Tools Renewed 800-247-3639 Fax 860-665-9821

CONSTRUCTION 3

- 4-1/4" Collared Chuck Liner
- Trunnion Type Steel Puller
- Dry Gland

PARTS LIST

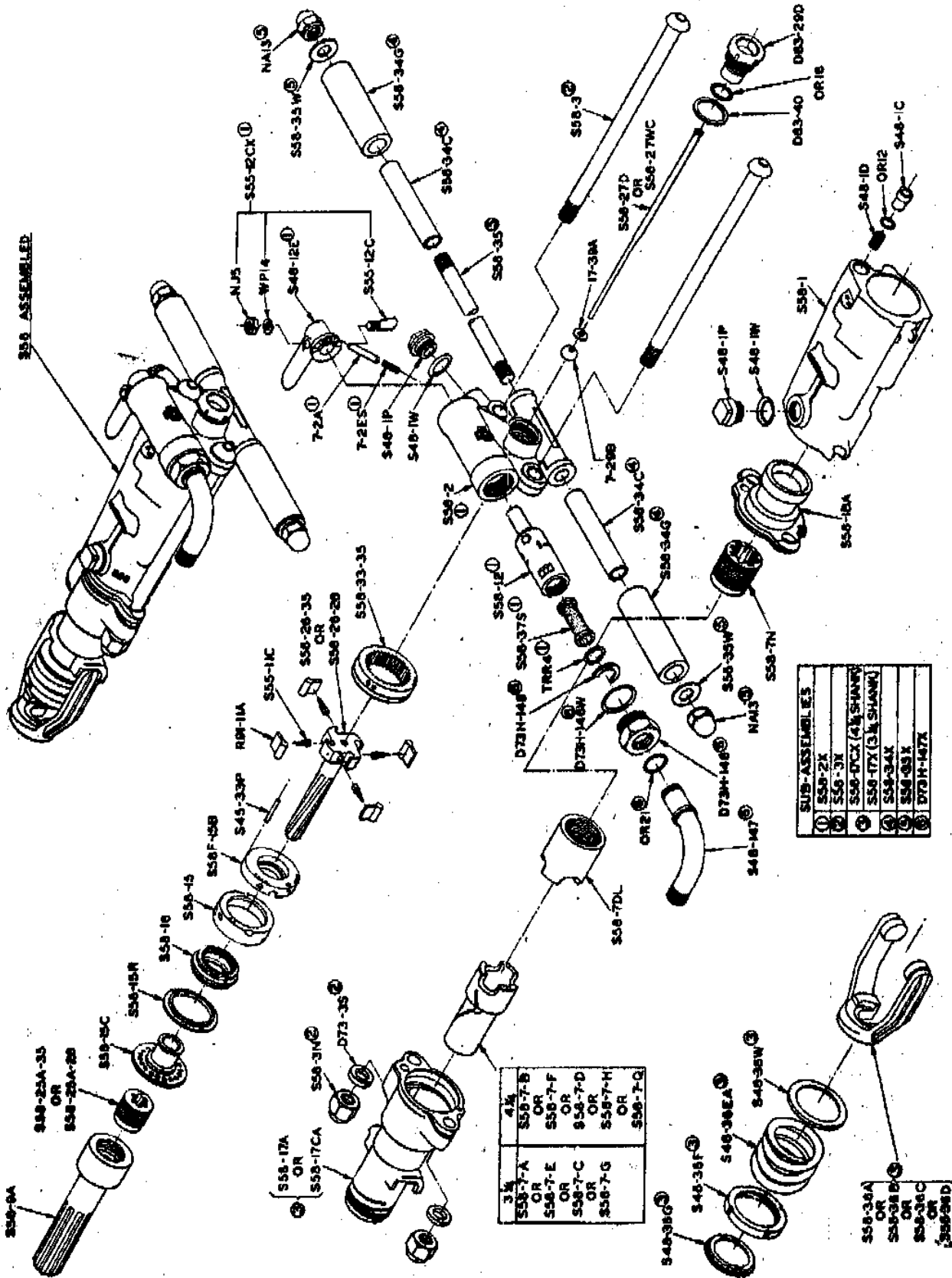
REF. NO.	PART NO.	DESCRIPTION	REF. NO.	PART NO.	DESCRIPTION
1	S581	Cylinder			
2	S581BA	Cylinder Bushing	32	S4533P	Valve Chest Pin
3	1S48715	Seal		S63F17FCX	Chuck End Assembly - Consists of items 33 - 43
	S582X	Backhead Assembly - Consists of items 4 - 13			
4	S582	Backhead	33	1040906	Chuck End
5	S5812	Throttle Valve Assembly - Includes Screen Assembly and Retainer Ring	34	S53F36A	Steel Puller - 7/8" Hex.
6	S5837S	Screen Assembly	34	S53F36B	Steel Puller - 1" Hex.
7	TRR4	Retainer Ring	35	S53F36TA	Trunnion - Includes O Ring
8	72A	Detent	36	ORP214B	Trunnion O Ring - 2 Required
9	72ES	Spring	37	S53F36N	Lock Nut - 2 Required
10	S4812E	Throttle Handle	38	S58F36N	Spring
	S5512CX	Bolt Assembly - Includes Bolt, Nut, and Lockwasher	39	1036703	Detent
11	S5512C	Bolt	40	1053971	Retainer - Includes O Ring and Grease Fitting
12	NJ5	Nut	41	ORP214B	O Ring
13	1049401	Lockwasher	42	Z1	Grease Fitting
14	S583	Side Rod - 2 required	43	1053943	Pin
15	S583N	Nut - 2 Required	44	1039146	Gland - Includes O Ring
16	D733S	Spacer - 2 Required	45	OR18	Gland O Ring
17	1041277	Chuck Liner - 7/8" Hex.	46	D8340	Washer
17	1041285	Chuck Liner - 1" Hex.	47	729B	Tube Gasket
18	S58F7DA	Chuck Driver	48	1739A	Tube Washer
19	S63F7N	Chuck Driver Nut	49	S5827D	Air Tube - 1/8" Orifice
20	S589A	Hammer		R883147X	Aircon Tube Assembly - Includes items 50 - 53
21	R9111A	Pawl - 4 Required	50	1031946	Aircon Tube
22	711C	Pawl Spring - 4 Required	51	R883146	Nut - Includes O Ring
22	711B	Pawl Plunger - 4 Required	52	OR21	O Ring
23	S583335	Ratchet Ring	53	D73H146W	Washer
24	S5825A28	Rifle Nut (fast rotation)		S5834X	Hand Grip Assembly - Includes Tube and Hand Grip
25	S5825A35	Rifle Nut (slow rotation)	54	S5834C	Tube - 2 Required
26	S582628	Rifle Bar (fast rotation)	55	S5834G	Hand Grip - 2 Required
26	S582635	Rifle Bar (slow rotation)		S5835X	T Handle Assembly - Includes stud, washer, and Locknut
27	S5815	Valve Chest - Bottom Half	56	S5835	Stud
28	S58F15B	Valve Chest - Top Half	57	S5835W	Washer - 2 Required
29	S5815C	Valve Plug	58	NA13	Locknut - 2 Required
30	S5815R	Retainer	64	S481P	Filter Plug
31	S5816A	Automatic Valve	65	S481W	Washer

* S5825A28 Rifle Nut (fast) must be used with S582628 Rifle Bar (fast) and S5825A35 Rifle Nut (slow) must be used with S582635 Rifle Bar (slow).

S58

For Parts Call Tools Renewed 800-247-3639 Fax 860-665-9821

Gardner-Denver S-58 Old Style Fronthead



9225458

MODEL S58 SINKER DRILL

For Parts Call Tools Renewed 800-247-3639 Fax 860-665-9821